

5.5. HW p 331-332 6, 10-13, 16-19, 21-23, 30
31, 33, 34

6. $AB < BC < CA$

10. $NP < MN < PM$

11. $DE < FG < DG$

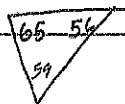
$m\angle C < m\angle A < m\angle B$

$m\angle M < m\angle P < m\angle N$

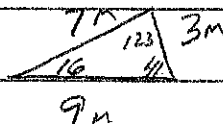
$m\angle G < m\angle D < m\angle F$

12. $C = 9$

> 8



13.



16. yes $6+7 > 11$

17. No $3+6 \neq 9$

18. yes $28+34 > 39$

19. yes $35+120 > 125$

21. 5, 12

22. 3m 4m

23. 12ft 18ft

$7in < x < 17in$

$1m < x < 7m$

$6ft < x < 30ft$

30. 90 is largest \angle
in a Rt \triangle

31. $PQ = \sqrt{58}$ $QR = 2\sqrt{5}$ $PR = 5\sqrt{2}$
 $\sqrt{52}$ $\sqrt{50}$

33. $x+11+2x+10 > 5x-9$

$3x+21 > 5x-9$

$30 \geq 2x$

$15 \geq x$

$x+11+5x-9 > 2x+10$

$6x+2 >$

$4x > 8$

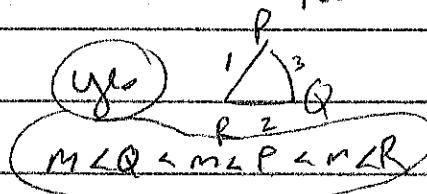
$x > 2$

$2x+10+5x-9 > x+11$

$7x+1 > x+11$

$6x > 10$

$x > \frac{5}{3}$



Restrictions

$x > -11$

$x > -5$

$x > \frac{9}{5}$

$2 < x < 15$

$$34, \quad 6x - 11 + 3x - 1 > 2x + 3$$

$$9x - 12 > 2x + 3$$

$$7x > 15$$

$$x > \frac{15}{7}$$

$$2x + 3 + 3x - 1 > 6x - 11$$

$$5x + 2 > 6x - 11$$

$$13 > x$$

$$x < 13$$

Restr.

$$6x - 11 + 2x + 3 > 3x - 1$$

$$x > \frac{11}{6} \quad x > \frac{1}{3}$$

$$8x - 8 > 3x - 1$$

$$x > -\frac{3}{5}$$

$$5x > 7$$

$$x > \frac{7}{5}$$

$$\frac{15}{7} < x < 13$$